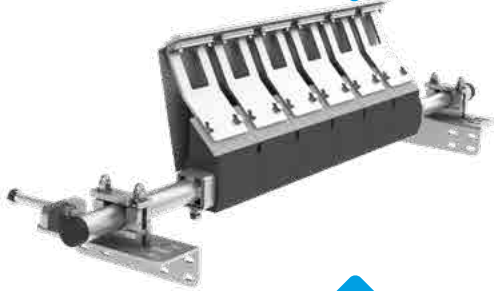


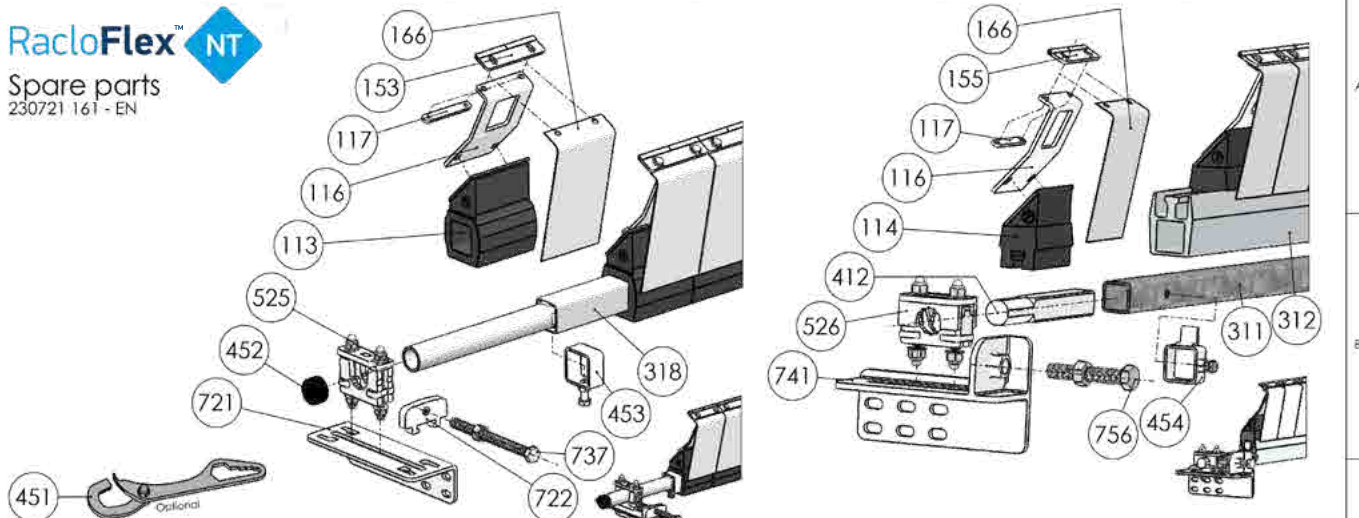
**RacloFlex™ NT**

**RacloFlex™ NT HD**


08/2024

**TECHNICAL DATA SHEET**

Position	Primary cleaner
1 or 2 ways working	2 ways
Maximum speed	<ul style="list-style-type: none"> <li>• NT: 2m/s</li> <li>• NT HD: 4m/s</li> </ul>
Blade type	Multi-blade independent scraper modules
Tension	Dual shore rubber block
Wear compensation	Manual blade adjustment
Pressure	Pushing screw
Blade fixing	Bolted
Mechanical splicing	Not recommended (tungsten carbide)
Tungsten carbide quality	Abrasion resistant = 93 HRA Impact resistant = 66 HRA
Structure quality	Steel ST37 Zinc plated (optional stainless steel)
Shaft size	<ul style="list-style-type: none"> <li>• NT: Ø42,4 th.4</li> <li>• NT HD: 50x50 plain</li> </ul>
Bolts quality	Stainless steel
Ambient temperature range	-10°C / +50°C
Product temperature range	0°C / +70°C (+120°C alternative)
Don't use on oil, solvent or hydrocarbon (on standard)	

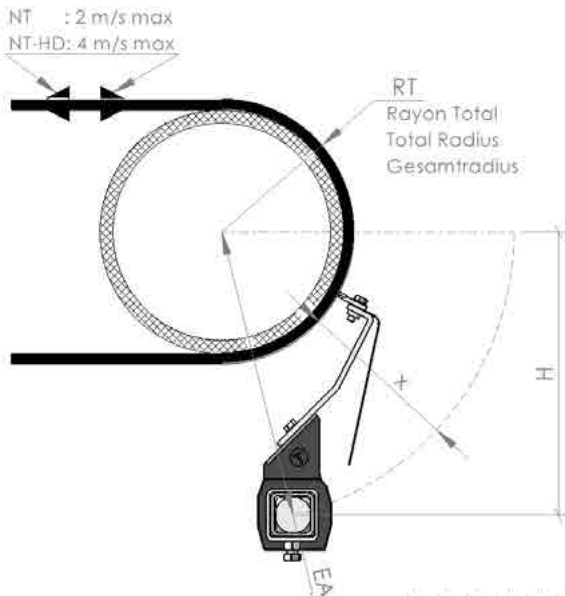
**RacloFlex™ NT**

 Spare parts  
 230721 161 - EN


Dimensions in millimeter

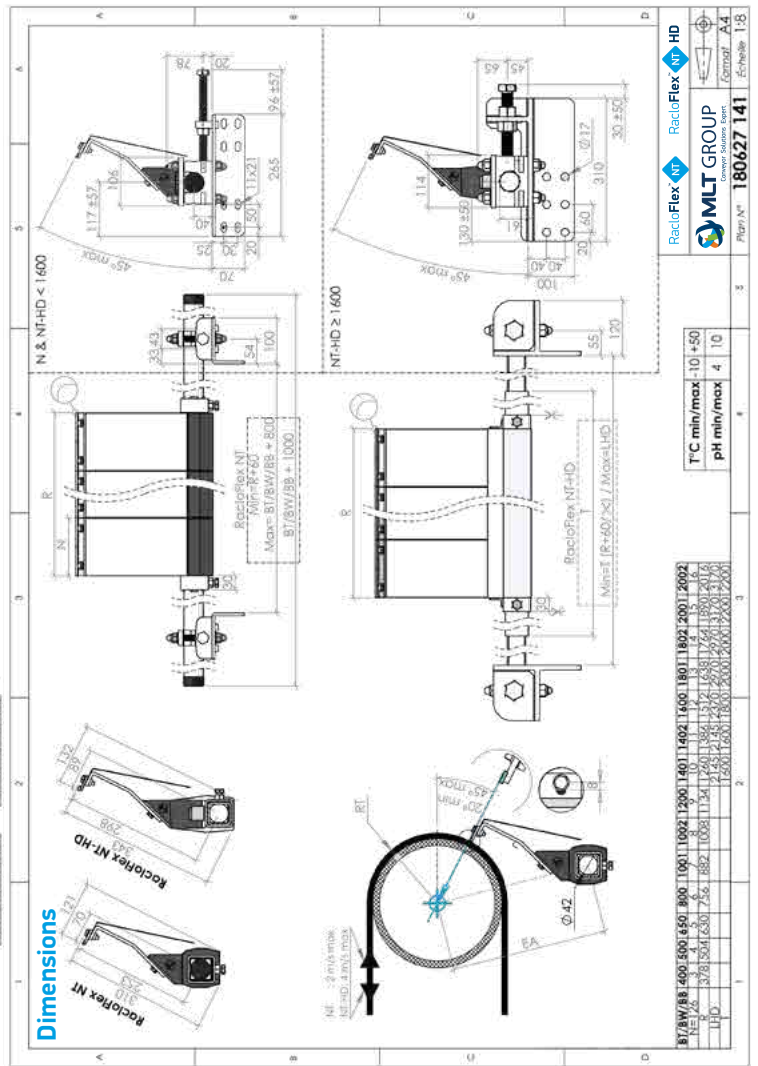
N°	Designation	Laterality	Quality	Variant(s)	Bell	Bloc Qty 111/112	Tube 311 Length	Profile 312 Length	Axe 412 Length	Bracket Size	Blocs & Tube	Left	Right
113	Bloc Type T		Rubber	123: Synthetic Rubber									
114	Bloc Type T-Profile		Rubber	124: Synthetic Rubber									
116	Arm NT		Galva. ST	126: Stainless Steel	400	3	500	0	300	721+525	13+311		
117	Double Nut NT		Galva. ST	127: Stainless Steel	500	4	650	0	300	721+525	13+311		
153	Blade T - Tungsten 3mm		Galva. ST	160: Alumina / 161: Ing3+SST	450	5	800	0	400	721+525	13+311		
			Galva. ST	154: Ing.Impact / 161: SST only	800	6	1000	0	400	721+525	13+311		
			Galva. ST	160: Alumina / 163: Ing3+SST	1001	7	1200	0	400	721+525	13+311		
155	Blade T - Tungsten 5mm		Galva. ST	160: Alumina / 161: SST only	1002	8	1200	0	600	721+525	13+311		
			Galva. ST	160: Alumina / 165: Ing5+SST	1200	9	1400	0	600	721+525	13+311		
			SST	156: PEHD	1402	11	1600	0	600	721+525	13+311		
164	Deflector NT		Galva. ST	331: SST	1401	10	1600	1280	600	721+525	14+3 2+311		
312	Profile		Aluminium		1402	11	1600	0	600	721+525	13+311		
318	Structure N-NT 42		Galva. ST	338: SST	1801	13	2000	638	1000	741+526	14+3 2+311		
412	Axe 40x40		Galva. ST	432: SST	1600	12	1800	512	600	741+526	14+3 2+311		
451	MultiTool wrench (optional)		Galva. ST		1801	13	2000	638	1000	741+526	14+3 2+311		
452	Cap		PVC		1802	14	2000	764	1000	741+526	14+3 2+311		
453	Locking ring		Galva. ST	473: SST	2001	15	2200	1890	1000	741+526	14+3 2+311		
454	Locking ring with hold		Galva. ST	474: SST	2002	16	2200	2016	1000	741+526	14+3 2+311		
455	Shift ring (optional)		Galva. ST	475: SST									
525	Bearing QL - Medium		Galva. ST	535: SST									
526	Bearing QL - Large		Galva. ST	536: SST									
721	Angle Medium only		Galva. ST	731: SST									
722	Angle Bridge Medium		Galva. ST	732: SST									
737	Pressure Bolt Medium M16x190		SST										
741	Angle Large	L or R	Galva. ST	751: SST									
756	Pressure Bolt Large M24x140		SST										

## Installation position



RT	100	125	150	175	200	225	250	275	300	325	350	375	400	425	450	475	500	525	550	575	600
x	205	195	185	175	170	160	155	150	145	140	135	130	130	125	125	120	120	115	115	115	115
EA	305	320	335	350	370	385	405	425	445	465	485	510	530	555	575	600	620	645	665	690	715
H min	290	295	300	305	315	320	325	330	340	345	350	360	365	370	380	385	390	400	405	410	420
H max	300	315	335	355	370	390	405	425	440	460	475	495	510	530	545	565	580	600	620	635	655

RT	100	125	150	175	200	225	250	275	300	325	350	375	400	425	450	475	500	525	550	575	600
x	250	240	230	220	210	205	200	190	185	180	180	175	170	165	165	160	155	155	150	150	150
EA	350	365	380	395	410	430	450	465	485	505	530	550	570	590	615	635	655	680	700	725	750
H min	335	340	350	355	360	370	375	380	390	395	400	410	415	420	425	435	440	445	450	460	465
H max	345	360	380	395	415	435	450	470	485	505	520	540	555	575	590	610	625	645	660	680	700

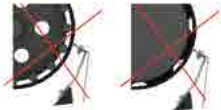


## INSTRUCTIONS

### Attention - Warning - Warnung



Incompatible avec huile  
Not compatible with oil  
Nicht kompatibel mit Öl



Incompatible sur tambour relief  
Not compatible on caperby drum  
Nicht kompatibel mit Rauheit Trommel

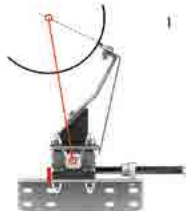


Pas d'impact sur les lames  
No impact on blades  
Kein Schlag auf die Klingen

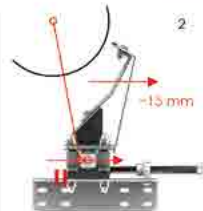


Incompatible avec fil, tissu ou feuille  
Not compatible with wire, cloth or sheet  
Nicht kompatibel mit Draht, Stoff oder Blatt

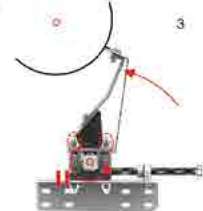
### Réglage étape par étape / Adjustment step-by-step / Einstellung Schritt für Schritt



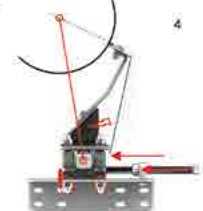
Fixer cornière, ajuster EA + faire une marque  
Attach bracket, adjust EA + make a mark  
Winkel befestigen + EA einstellen + markieren



Reculer palier et lame  
Back-off bearing and blade  
Schaber und Achshalter rückwärts fahren



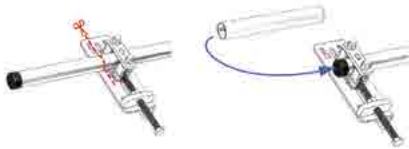
Tourner lame sur le tambour, puis bloquer axe  
Turn blade against drum and lock the shaft  
Schaber gegen Trommel drehen und Achsen verriegeln



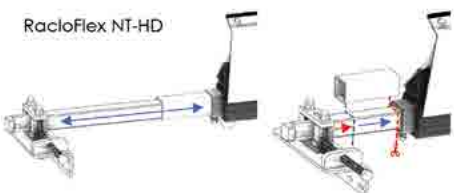
Pousser polier jusqu'à EA correct, vérifier pression.  
Bloquer tout  
Push up to good EA, check pressure. Lock all  
Schieben bis korrekten EA. Druck überprüfen, alles verriegeln

### Axes et réglage de la largeur / Axes and width adjustment / Achsen und Breitereinstellung

#### RacloFlex NT

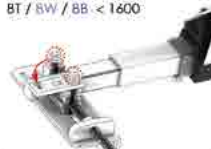


#### RacloFlex NT-HD



### Désengager / Desengage / Ausrücken

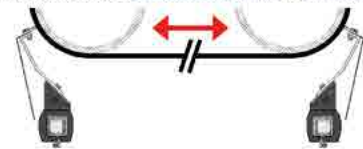
#### BT / BW / BB < 1600



#### BT / BW / BB ≥ 1600



### Bande réversible / 2 Ways belts / Reversierbänder



### Remplacement / Replacing / Ersatz

Régler suivant usure ou forme / Adjustment according to wear or shape / Folgender Verschleiß oder Einstellung Form



Arrondir les coins extérieurs / Round the outside corners / Runde die äußere Ecke

